

**COLLEGE OF HUMAN ECOLOGY  
FACULTY COUNCIL\* BYLAWS**

Revised April 3, 2014

**I. PURPOSE**

Human Ecology Faculty Council is the primary body representing faculty in the College of Human Ecology governance structure. The charge of the Faculty Council includes, but is not limited to, the items presented in the Committee of Faculty Organization Report, approved November 1984. The role of the council relative to the overall governance structure of the college appears in Appendix A. Items 1 through 8 below are taken from the November 1984 document.

College faculty: The College Faculty shall consist of all faculty of the College of Human Ecology carrying *regular appointment* as defined in the Kansas State University Handbook (Section C10).

1. Elect officers: Chair  
Chair-elect  
Secretary  
(Responsibilities of officers are outlined in Section IV of the bylaws.)
2. Develop agenda for faculty meetings and distribute to faculty members one week prior to meeting date. Agenda items should be to the chair ten days prior to the meeting date.
3. Conduct faculty meetings.
4. Distribute minutes of faculty meetings within one week of meeting date.
5. Propose by-laws and conduct faculty council elections, or selections by customary processes.
6. Receive, implement and coordinate actions of the three standing committees: Academic Affairs, Faculty Affairs, and Diversity and Internationalization. The responsibilities of the three standing committees and the relationship of the three standing committees to the Faculty Council are outlined in Appendix B.
7. Serve as an advisory committee to the Dean for public relations, status of college, budget concerns, long-range planning, and other college related issues.
8. During the academic year meet no fewer than six times inclusive of college meetings. Additional meetings may be called by the chair.
9. Provide a subgroup which will serve as the College of Human Ecology Committee on Planning (CCOP). The CCOP is required by the University Financial Exigency Document (Faculty Handbook Appendix A) and is to advise the Dean when financial exigency is declared by the President.

## **II. MEMBERSHIP**

1. Faculty Council shall consist of the following fifteen voting members and two non-voting ex-officio members as listed below.

Departmental/School Representatives (one each) from:

Apparel, Textiles, and Interior Design

Human Nutrition

Family Studies and Human Services

Hospitality Management and Dietetics

Kinesiology

Gerontology (Center on Aging) (one)

At-Large Representatives (two) who hold the positions of chair and chair-elect of faculty council

General Human Ecology

Committee Chairs:

Academic Affairs (one)

Faculty Affairs (one)

Diversity and Internationalization (DiveIn) (one)

Student Representatives:

Undergraduate Student (one) Graduate Student (one)

FSCOUP Representative

Ex-Officio, non-voting:

Faculty Senate Executive Committee Member

Dean

2. The College Committee on Planning (CCOP) includes the following nine voting members and the FSCOUP representative:

Selected, by departmental/unit processes, Departmental, Unit Representatives from:  
ATID, HN, FSHS, HMD, KIN, Gerontology, General Human Ecology

At-Large Representatives (two) who are the chair and chair-elect of faculty council

Dean's Office Representative (non-voting)

## **III. ELIGIBILITY**

1. Eligibility to Serve on Faculty Council as At-Large and Departmental/School, General Human Ecology and Gerontology Representative

All faculty (except for deans, associate deans, assistant deans and department heads/school director) with a .1 or greater appointment at the rank of instructor or above

in a department/school in the College of Human Ecology are eligible to be elected as at-large representatives and departmental/school representative to faculty council and the standing committees outlined in Appendix B.

Faculty in the College of Human Ecology Dean's Office with a .1 appointment at the rank of instructor or above and a .5 or greater appointment at ~~KSU~~ Kansas State University are eligible to serve as ~~area~~ representatives to Faculty Council and the standing committees outlined in Appendix B.

## 2. Eligibility to Vote at Faculty Meetings

All faculty with a .1 or greater appointment at the rank of instructor or above in the College of Human Ecology are eligible to vote at faculty meetings of the College of Human Ecology. According to the Kansas State University Handbook (Section C10), college faculty shall consist of all faculty of the College of Human Ecology carrying a regular appointment.

## 3. Eligibility to vote at Departmental and School Meetings

Eligibility to vote at Departmental and School Meetings is at the discretion of the department or school.

## **IV. OFFICERS**

Faculty Council shall elect a secretary at the first meeting of each academic year. Officers of Faculty Council and responsibilities are as follows.

Chair: The chair will conduct faculty council and general faculty meetings and will relate faculty council recommendations to the dean. The chair will be responsible for developing and distributing the agenda for faculty council meetings and faculty meetings. The term of chair will be for one academic year. Following this term, the out-going chair will become the chair of the faculty affairs committee for one year.

Chair-elect: The chair-elect will be responsible for acting in the chair's place in the chair's absence. The chair-elect will be the primary faculty council person responsible for elections, as outlined in the section on elections. The chair-elect will also be responsible for the posting or distribution of faculty council, college committee and faculty senate committees' minutes. All college committees will provide copies of their meeting minutes within 10 days after each meeting to the chair-elect who will be responsible to post them to the college webpage.

Secretary: The secretary will be responsible for taking minutes submitting them to the chair-elect for posting to the college website, determining if a quorum is present at faculty council meetings.

## **V. ELECTIONS or SELECTIONS BY DEPARTMENTAL/SCHOOL/UNIT PROCESSES**

Elections or selections (as by departmental/school/unit processes) will be held each spring..

1. At-large Representative (faculty council chair-elect).

Term: three years, overlapping

An at-large representative will be elected each spring for a ~~two~~-three year term. This person will serve as chair-elect of faculty council in the first year of the term and as chair in the second year of the term and chair of the faculty affairs committee in the third year. The current chair-elect of faculty council, having obtained the names of eligible faculty from the dean's office, will be responsible for soliciting nominations from the faculty and for conducting the election with clerical help from the dean's office. Any faculty member in the college may nominate a faculty member to be on the ballot. All voting will be conducted electronically (e.g., email or electronic survey). The election will be conducted by the last working day of March. Ballots will be counted by the current chair-elect and chair of Faculty Council. If the results of the election reveal that fewer than 1/3 of eligible college members voted then the voting period will be extended and additional reminders for the casting of votes will be sent out electronically. Results of the election after the time extension will stand. Following the election, the faculty council chair will notify the faculty member elected and will announce the results of the election to the college.

2. Department/School Representatives to Faculty Council.

Term: two years, overlapping

FSHS, HMD, KIN, selected in odd years.

| ATID, HN, selected in even years.

Department/school representatives will be selected (as by departmental/school processes) in the spring before the end of the semester. The department head or school director, in cooperation with faculty council department/school representative, will make the selection.

3. General Human Ecology Representative selected in even years.

The General Human Ecology representative will be selected in the spring after the at-large representative/chair-elect has been elected. The representative will be selected from the pool of Human Ecology appointed general human ecology faculty. General human ecology unit faculty will make the selection

4. Gerontology (Center on Aging) Representative

Term: two years, selected in even years

The Gerontology (Center on Aging) representative will be selected in the spring after the at-large representative has been elected. The representative will be selected from the pool of Human Ecology appointed gerontology faculty. Gerontology faculty will make the selection.

5. Department/School Representatives to Standing Committees.

Terms: two years, overlapping

Faculty representatives to College of Human Ecology Academic Affairs, Faculty Affairs, Diversity and Internationalization (DiveIn), and Promotion and Tenure committees will be

selected from each department or school after the election of the at-large representative and selection of departmental/school representatives to Faculty Council. The departmental/school representative will be responsible for making sure that the departmental/school representatives are selected according to the schedule on the following page. The departmental/school representative may ask for volunteers to serve or may be appointed. Information about the composition of each committee is found in Appendix B.

6. Gerontology (Center on Aging) Representative to Academic Affairs Committee.  
Term: two years, selected in odd years

One Gerontology faculty member will be selected by the Center on Aging to represent the Gerontology (Center on Aging) on the Academic Affairs Committee. The Gerontology faculty member does NOT have to be a College of Human Ecology faculty member. The director of the Center on Aging will assure that a representative is selected by customary processes.

7. General Human Ecology Representative to Academic Affairs Committee.  
Term: two years, selected in even years.

One General Human Ecology academic representative will be selected by the General Human Ecology staff who do NOT need to be a College of Human Ecology faculty member. The College of Human Ecology coordinator of the General Human Ecology program will assure that a representative is selected by customary processes.

8. Committee Representatives to Faculty Council.

The selection of committee representatives must be completed by the last day of March. After the completion of selections of department/school representatives to college committees, the committees will convene with their new membership before the end of the spring semester to select a chair for the following year and a secretary who will be responsible for taking, writing and submitting minutes to the chair-elect. Committee chairs, who must be college faculty, will be selected by customary selection processes from committee members who will be serving the second year of their term on the committee. The committees are responsible for developing their own operating procedures which shall be approved by Faculty Council. The charges of the committees and their position in faculty governance organization of the college is indicated in Appendix B

<u>Dept/School/ Unit</u>	<u>Even Year Selections</u>	<u>Odd Year Selections</u>
HN	Faculty Council Rep. **** Academic Affairs Comm. Faculty Affairs Comm. ****	**** Promotion & Tenure Comm. Academic Affairs Comm. **** Diversity/Internationalization Comm.
ATID	Faculty Council Rep. **** Academic Affairs Comm. Faculty Affairs Comm. ****	**** Promotion & Tenure Comm. Academic Affairs Comm. **** Diversity/Internationalization Comm.
HMD	**** Promotion & Tenure Comm. Academic Affairs Comm. **** Diversity/Internationalization Comm.	Faculty Council Rep. **** Academic Affairs Comm. Faculty Affairs Comm. ****
FSHS	**** Promotion & Tenure Comm. Academic Affairs Comm. **** Diversity/Internationalization Comm.	Faculty Council Rep. **** Academic Affairs Comm. Faculty Affairs Comm. ****
General HE	Faculty Council Rep.	Academic Affairs Comm. Rep
Gerontology (Center on Aging)	Faculty Council Rep	Academic Affairs Comm. Rep
KIN	**** Promotion & Tenure Comm. Academic Affairs Comm.	Faculty Council Rep. **** Academic Affairs Comm. Faculty Affairs Comm
Dean's Rep. (Ex. Officio)	Faculty Council Rep. Academic Affairs Comm. Faculty Affairs Comm. Diveln Comm.	Faculty Council Rep. Academic Affairs Comm. Faculty Affairs Comm. Diveln Comm.

9. Student Representatives to Faculty Council and Committees

Undergraduate. One undergraduate student will be selected to represent undergraduate students on the Faculty Council, one undergraduate student will be selected to represent undergraduate students on the Academic Affairs Committee, and one undergraduate student will be selected to represent undergraduate students on the Diversity and Internationalization Committee. The selection will be conducted by customary processes by the Human Ecology College Council. The representatives will be selected before the first Faculty Council meeting of the fall.

Graduate. One graduate student will be selected to represent graduate students on the Faculty Council, one graduate student will be selected to represent graduate students on the Academic Affairs Committee, and one graduate student will be selected to represent graduate students on the Diversity and Internationalization Committee. Graduate student representation will be rotated among the departments and school, and departmental/school selections will be by the department heads/chair, school director as by customary processes among the graduate students enrolled and in good standing in a department or school. The four year rotation for each unit shall be as follows.

Graduate Student Selection Schedule	Year 1 2017-18	Year 2 2013-14	Year 3 2014-15	Year 4 2015-16	Year 5 2016-17
Academic Affairs Committee	FSHS	KIN	ATID	HN	HMD
Faculty Council	HMD	FSHS	KIN	ATID	HN
Diversity/Internationalization	HN	HMD	FSHS	KIN	ATID
No reps selected	ATID/ KIN	HN/ ATID	HMD/ HN	FSHS/ HMD	KIN/ FSHS

The representatives will be selected prior to the first Faculty Council meeting of the fall.

10. Vacancies.

In the event the position of faculty council Chair or Chair-Elect is vacated, a new election will be held promptly using the election procedures outlined above in item 1. The person elected will serve out the remainder of the term of the original council member. If other positions on faculty council are vacated, then it is the responsibility of the body represented by that position to select, by customary processes, a qualified individual to fill the position in order to serve out the remainder of the term of the original council member.

## **VI. MEETINGS**

### 1. Faculty Council

During the academic year Faculty Council shall meet no fewer than six times inclusive of college meetings or when called by the chair. The first meeting of the academic year will normally be in August as part of a college meeting. The Faculty Council may change any meeting date in order to avoid conflicts with the University or college calendar, or may dispense with a regular meeting if there is no agenda to be presented. However, in no case shall two consecutive meetings be canceled. The calendar of meetings for each semester will be established at the first meeting of each semester.

### 2. Human Ecology Faculty

Human Ecology faculty meetings will be held no less than two times a year.

### 3. College Committees

College committees that report to Faculty Council shall select a meeting time prior to the Faculty Council meeting time, allowing adequate time to distribute relevant documents prior to the Faculty Council meeting.

## **VII. QUORUM**

### 1. Faculty Council

A quorum at Faculty Council meetings shall consist of a majority of the voting members of the Faculty Council, and no meeting shall be official unless a quorum is present. It is the responsibility of the member to notify the chair of a proxy.

### 2. Human Ecology Faculty

All voting will be conducted electronically (e.g., email or electronic survey). If the results are fewer than 1/3 of eligible college members voting then the voting date will be extended and additional reminders for casting votes will be sent out electronically. Results of the voting after the time extension will stand.

## **VIII. BYLAWS AMENDMENT**

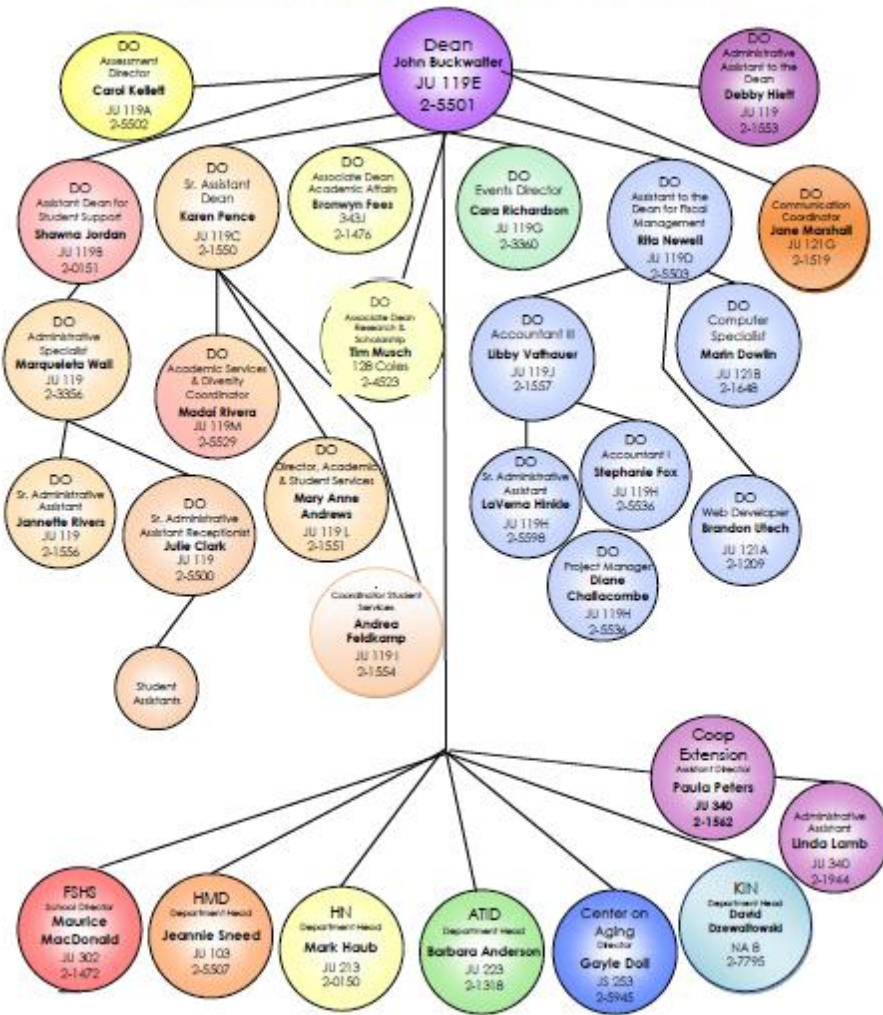
College of Human Ecology bylaws can be amended by 2/3 vote of College of Human Ecology faculty provided that the proposed change has been distributed to the college thirty days prior to the vote.

Adopted May 7, 1987  
Revised May 5, 1988  
Revised October 14, 1988  
Revised August 19, 1991  
Revised September 11, 1992  
Revised February 10, 1995

Revised April 5, 1996  
Revised April 2, 1999  
Revised February 16, 2001  
Revised April 24, 2006  
Revised October 13, 2008  
Revised May 3, 2013  
Revised April 3, 2014



COLLEGE OF HUMAN ECOLOGY 2013-2014



**COLLEGE OF HUMAN ECOLOGY**

**FACULTY COUNCIL**

In addition to these bylaws, faculty council business and governance are informed by the university's governance documents and systems.

Refer to the Office of Academic Personnel for:

- University governance handbooks, manuals: [www.k-state.edu/academicpersonnel/handbook/](http://www.k-state.edu/academicpersonnel/handbook/)
- Faculty Senate Committees: [www.k-state.edu/academicpersonnel/univcomm/fsc.html#aa](http://www.k-state.edu/academicpersonnel/univcomm/fsc.html#aa)

**Academic Affairs Committee (AAC) charge and composition as defined by Faculty Council.**

Reviews all College of Human Ecology proposed course and curriculum changes.

To whom does the committee report:

Faculty Council

Meeting date/time:

Meet in September, October, November, January, February and April of each year. Additional meetings may be called at the discretion of the chair.

Course and curriculum change proposals will need to be to committee members 6 class days prior to the Academic Affairs meeting. The chair of the Academic Affairs Committee will notify each department head or school director of these deadlines by September 1 of each academic year.

Composition of Committee:

1. Voting members (14 voting members)

Two faculty members per unit- unclassified - instructor or above - one of which must be a member of graduate faculty – two year term with staggered election in spring (HN, ATID, HMD, FSHS, KIN - one member selected each year).

One faculty representative from Gerontology. Member selected in odd years for two year term.

One faculty member representing programs in General Human Ecology selected by faculty in those areas for a two year term; elected in even years.

One graduate student member – one year term. One undergraduate student – one year term.

2. Non-voting members

Associate Dean for Academic Affairs - Ex Officio

Human Ecology Faculty Senator from Academic Affairs committee - Ex Officio

**Faculty Affairs Committee (FAC) charge and composition as defined by Faculty Council.**

Selects recipients of faculty awards and recommends to the Dean which award nominees will be forwarded for University awards.

Recommends SRO grant awards to the Dean.

Addresses policies, procedures, concerns relating to faculty (ie., faculty evaluation, work load issues) as needed.

To whom does the committee report:

Faculty Council

Meeting date/time

Meets on an as-needed basis

Composition of Committee

1. Voting Members (6 voting members)

One faculty member per unit - instructor or above – two year term (HN, ATID - even years; HMD, FSHS and KIN - odd years).

One faculty member from the Dean's Office to be selected in even years by faculty in the Dean's Office.

2. Non-Voting members:

One department head or school director to be elected yearly by Dean's Administrative Council - Ex Officio.

Faculty Senate Faculty Affairs Committee representative – Ex Officio.

## **Diversity and Internationalization (DiveIn) Committee charge and composition as defined by Faculty Council.**

Promotes diversity and internationalization efforts.

Specifically:

- Considers policies and procedures relating to diversity and international initiatives
- Selects of CHE International Travel Scholarships for UG and GR students
- Selects CHE Multicultural scholarships to international and domestic multicultural UG and GR students
- Contributes to the President's Commission on Multicultural Affairs reports
- Provides representation on departmental search committees

### To whom does the Committee Report

Faculty Council

### Meeting Date/Time

Meet at least twice each semester during the fall and spring semesters; additional meetings called as deemed necessary by chair.

### Composition of Committee:

#### 1. Voting Members (9 voting members)

One faculty member per unit - instructor or above – two year term (HN, ATID, Extension - odd years; HMD, FSHS and KIN - even years).

Academic Services and Diversity Coordinator will serve as the Ad Hoc Dean's Office Representative.

One graduate student member – one year term.

One undergraduate student – one year term.

#### 2. Non-Voting Member

Assistant Dean or Associate Dean for Academic Affairs - Ex Officio

## **College Promotion and Tenure Committee charge and composition as defined by Faculty Council.**

### Charge of Committee

To confidentially review the documentation submitted by each candidate for tenure and/or promotion, the unedited comments of the tenured departmental faculty (and of the faculty at the appropriate rank for promotion decisions), the vote of these faculty, and the recommendation of the department head/school director.

To assure that all applicable procedures have been followed and that the department/unit in arriving at a recommendation did so fairly by applying established criteria and guidelines for tenure/promotion. The committee, in advising the dean, will base its recommendation exclusively on a comparison of the candidate's credentials with the criteria, standards, and guidelines of the candidate's department/unit (Kansas State University Handbook C113 and C153).

To discuss this information and provide a written recommendation and committee vote to the dean as to whether or not all applicable procedures were followed. The report must also contain the rationale behind the committee's recommendation by providing a detailed evaluation of the candidate's credentials with regard to how they meet or fail to meet the specific criteria, standards, and/or guidelines of the candidate's department/unit (Kansas State University Handbook C113 and C153).

Note: A committee member may **not** vote on candidates seeking tenure and/or promotion in his/her academic unit, but may contribute to the discussion and to the written comments given to the Dean. Therefore, only three faculty will be voting on each candidate.

### To Whom Does the Committee Report College Dean

### Meeting Date/Time

Once in the fall semester after committee members have reviewed the candidates' files. Additional meetings may be called, if necessary, by the chair.

### Composition of Committee (5 voting members)

Members must be tenured with the rank of professor. If no one in a department holds the rank of professor, then an associate professor may serve.

One faculty member shall be selected by departmental or school processes from each department/school serving two-year staggered terms (ATID and HN elected in odd years, HMD, FSHS and KIN in even years).

Elections will take place in the spring. The departmental representatives to faculty council will be responsible for making sure that a tenured professor is elected to serve on this committee, every other year, from their department. (See elections section of the by-laws.)

If a faculty member with extension tenths is being considered for tenure and/or promotion, and none of the departmental representatives on the committee has an extension appointment of more than 5 tenths, the Dean will appoint a tenured faculty member with an extension appointment of more than 5 tenths, who also holds the rank of professor or associate professor, as a non-voting ex-officio member of the committee. The ex-officio member will contribute to the discussion and to the written comments given to the Dean only for the candidate with extension tenths.

**2013-14 College of Human Ecology Faculty Committee Service**

<b>Faculty Council</b>			<b>Promotion and Tenure Committee</b>		
At-large Rep.	Elaine Johannes (Chair)	2013-14	ATID Rep.	Sherry Haar	2013-15
At-large Rep.	Bob Garcia (Chair-elect)	2013-15	FSHS Rep.	Briana Goff	2012-14
Dean	John Buckwalter (Ex. Officio)		HN Rep.	Edgar Chambers IV	2013-15
ATID Rep.	Peggy Honey	2012-14	HMD Rep.	Deborah Canter	2012-14
FSHS Rep.	Cliff Robb	2013-15	KIN Rep.	Tom Barstow	2012-14
HE Rep.	Karen Pence	2013-15	<b>CHE Diversity and Internationalization Committee</b>		
HN Rep.	Ric Rosenkranz	2012-14	HN, Faculty	Delores Chambers	2013-15
HMD Rep.	Mary Molt	2013-15	HMD Graduate Student	Brian Park	2013-14
KIN Rep.	Mary McElroy	2013-15	HMD, Faculty	Stephan Lee	2012-14
FSCOU Rep.	Barbara Anderson	2013-14	Undergraduate Student	Hannah Querheim	2013-14
FS Exec. Rep.	Robert Garcia (Ex. Officio)	2013-14	ATID, Faculty	Hyung Chan Kim	2013-15
AAC Chair	Karen Pence	2013-14	FSHS Extension, Faculty	Charlotte Olsen	2012-14
FAC Chair	Mary Meck Higgins	2013-14	FSHS, Faculty	Terrie McCants	2012-14
Gerontology	Dana Hunter	2013-15	KIN, Faculty	Mary McElroy	2012-14
DIVE-IN Rep.	Shawna Jordan	2013-14	Dean's office	Madai Rivera	
GR Stu. Rep. FSHS	Tonya Ricklefs	2013-14	Assoc./Assist. Dean Acad. Aff.	Shawna Jordan (Ex. Officio)	
UG Stu. Rep.	Jennifer Butler, HE Cncl. Pres.	2013-14	<b>Ph.D. Coordinating Committee</b>		
<b>College Committee on Planning (CCOP)</b>			Chair	Tim Musch, Associate Dean	
At-large Rep.	Elaine Johannes (Chair)	2013-15	ATID Rep.	Sherry Haar	2012-14
At-large Rep.	Bob Garcia (Chair-elect)	2013-15	FHM Rep.	Jeannie Sneed	2012-14
ATID Rep.	Peggy Honey	2012-14	FS Rep.	Walter Schumm	2013-15
FSHS Rep.	Jane Garcia	2013-15	LSHD Rep.	Rick Scheidt	2013-15
HE Rep.	Karen Pence	2013-14	PPF Rep.	Sonia Britt	2012-14
HN Rep.	Koushik Adhikari	2012-14	KIN Rep.	David Dziewaltowski	2012-14
HMD Rep.	Junehee Kwon	2013-15	MFT	Sandi Stith	2013-15
KIN Rep.	David Poole	2013-15	<b>Scholarship Committee</b>		
FSCOU Rep.	Barbara Anderson	2013-14	ATID Rep.	Barbara Anderson	
<b>Academic Affairs Committee (AAC)</b>			FSHS Rep.	Linda Hoag	
HE Rep.	Karen Pence (Chair)	2013-15	HE Rep.	Karen Pence	
HMD Rep.	Kelly Whitehair	2013-15	KIN Rep.	David Poole	
HMD Rep.	Kevin Roberts (grad faculty)	2012-14	HN Rep.	Katharine Grunewald	
ATID Rep.	Ji Hye Kang	2013-15	HMD Rep.	Deb Canter	
ATID Rep.	Migette Kaup	2012-14	Chair	Shawna Jordan	
Gerontology	Migette Kaup (grad faculty)	2013-15	<b>Graduate Council</b>		
KIN Rep.	Rob Pettay	2012-14	Soc. Sci, GCCOP	Walter Schumm	2013-15
KIN Rep.	Tom Barstow (grad faculty)	2013-15	CHE Rep.	Kadri Koppel	2013-15
FSHS Rep	Linda Hoag	2012-14	<b>Faculty Senators</b>		
FSHS Rep	Kristy Archuleta	2013-15	FS-Fac. Affairs	Jared Anderson	2011-14
HN Rep	Katharine Grunewald	2012-14	FS- Exec	Robert Garcia	2012-15
HN Rep	Kadri Koppel	2013-15	FS- Acad Affairs	George Wang	2012-14
UG Stu. Rep.	Sarah Thies (HE Cncl. V Pres.)	2013-14	FS- FSCOU (Chair)	Barbara Anderson	2013-14
GR Stu. Rep. KIN	Joey Lightner	2013-14	FSCOT	Brian Lindshield	2011-15
FS-AAC	George Wang (Ex. Officio)	2013-14	FS - Acad. Affairs	Debra Bolton (Extension)	2012-14
Assoc. Dean	Bronwyn Fees (Ex. Officio)		FS-Fac. Affairs	Mindy Markham (K-State Salina)	2013-14
Secretary	Marqueleta Wall (staff support)		Professional Staff Affairs	Mary Anne Andrews	2013-14
			<b>College Assessment Review Committee (CARC)</b>		
<b>Faculty Affairs Committee (FAC)</b>			Chair	Carol Kellett	
HMD Rep	Amber Howells	2013-15	HMD	Kevin Roberts, Jeannie Sneed, Deb Canter	
FSHS Rep.	Jared Durtschi	2013-15	HN	Shawna Jordan & Mark Haub	
ATID Rep.	Bryan Orthel	2012-14	FSHS	Karen Myers-Bowman, Maurice MacDonald,	
HE Rep.	Tim Musch, Associate Dean	2012-14		Kristy Archuleta, Mary Deluccie, Sandi Stith,	
HN Rep.	Mary Meck Higgins	2012-14		Rick Scheidt, David Thompson, Bronwyn Fees,	
KIN Rep.	Christian Larson	2013-15		Terrie McCants, Bob Garcia	
FS-Fac Affairs	Jared Anderson (Ex. Officio)	2013-14	ATID	Joy Kozar, Sherry Haar, Barbara Anderson,	
Dept. Head	Maurice MacDonald (Ex. Officio)	2013-14		Migette Kaup	
<b>Academic Standards Committee</b>			KIN	Craig Harms	
(Chair) Mary Anne Andrews	Pat Pesci	Debra Burnett	FACS ED	Carol Kellett	
<b>University Honor Council</b>			Gerontology	Gayle Doll	
	Missy Schrader	Karen Roberts	Youth Dev.	Elaine Johannes	
<b>University International Activity Council</b>					
	Shawna Jordan				